



KWS51 Window Suite



Technically advanced framing systems with slim sight lines. The KWS Window Suite is fabricated using a mechanical corner cleat, which ensures easy and fast fabrication times. KWS is available in both 51 mm and 75 mm wide profile sections.

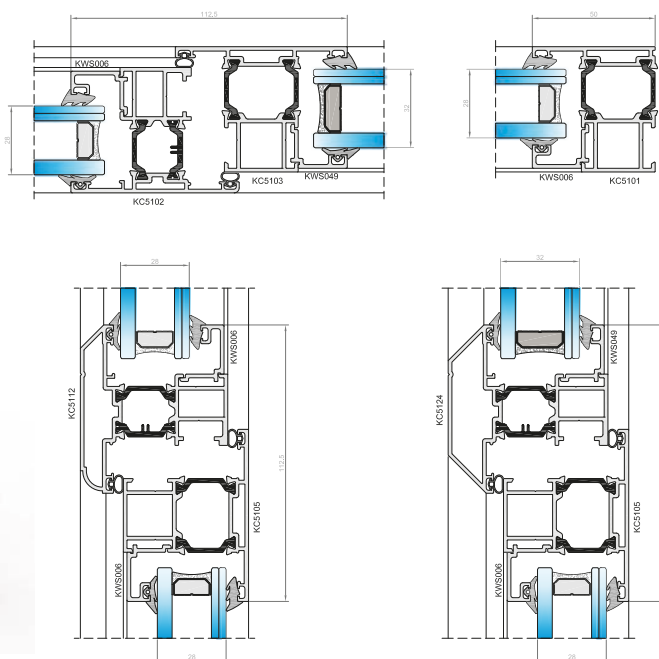
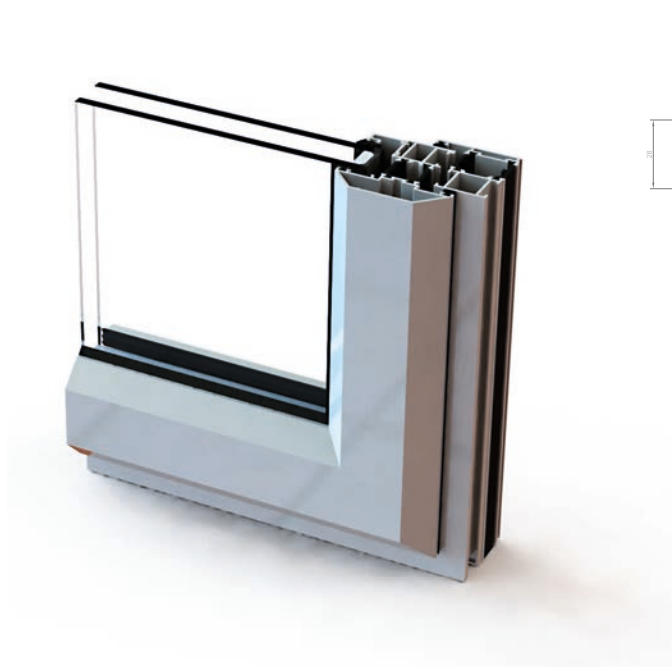
The systems can be used for punched hole, composite and ribbon window applications. Also, both new build and refurbishment schemes.

The window system is fully drained either onto a cill section or with our innovative face drain cap. This includes an internal baffle, to stop wind noise, and to minimise the build-up of water. Creating excellent weather resistance.

The window suite can be dry glazed from the inside or outside using clip-in beads for ease of fabrication and quicker glass replacement. Trickle ventilation to building regulations, can be integrated into the KWS Window System.

- Top and side hung applications.
- Polyamide thermally broken aluminium frames, for improved thermal efficiency.
- 28 mm glass, as standard.
- Joined using mechanical corners.
- 75 mm polyamide sub frame section, for easy to install modular windows.
- Easy clean and egress options available.
- Cills, add ons, curtain wall insert and coupler sections available.

3D PROFILE SECTION



Materials

Aluminium is extruded in accordance with BS EN 755 Part 1-9:2008 and BS EN 12020-2:2008.

Polyester Powder Coating material is produced in accordance with BS 6496/97:1984.

Silver Anodising is produced in accordance with BS EN 12373, ranging from 5-25 microns.

Polyamide Thermally Broken Aluminium is produced in accordance with BS EN 14024:2004.

Gasketry is produced in accordance with BS EN 3734:1997.

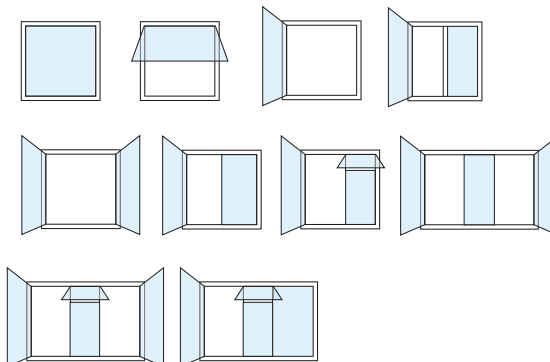
Testing

Security tested to BS 7950:1997.

Weather tested to BS 6375-1:2009.

Test certificates available upon request.

Typical Configurations



	Max. Vent Top Hung Size (mm)	Typical U-Values (Opening / Fixed)	
		1200x1200	1500x1500
KWS51 Window	1500x1500	1.8 / 1.5	1.7 / 1.4
KWS51 Sub frame	1500x1500	1.9 / 1.5	1.7 / 1.5

Please note: U-Values are dependant on size and glass U-Values.
The above are based on glass U-Values of 1.1 W/m²K.

Place Your
Company
Details Here



exlabesa
WINDOWS · DOORS · FACADES